



[CONTACT US \(/CONTACT/CONTACT-US-ONLINE/\)](/CONTACT/CONTACT-US-ONLINE/)

## Inverted Laboratory Microscope Leica DM IL LED

With high-performance optics and ergonomic design, the Leica DM IL LED is ideal for cell culture, micromanipulation, documentation of immunostained specimens, and routine live cell examinations.

The Leica DM IL LED features a comprehensive set of contrast methods to monitor your specimen the way you need. High-quality Phase contrast, excellent modulation contrast and brilliant fluorescence are just one fingertip away. Robust stability, plenty of space to work with tools, long working distances to accommodate large culture flasks and a stable illumination without heat make work at the microscope easy and convenient.

For special diagnostics requirements, the microscope is certified for in-vitro-diagnostics (IVD) including in-vitro-fertilization (IVF).

[CONTACT US \(/CONTACT/CONTACT-US-ONLINE/?NO\\_CACHE=1&PRODUCT=LEICA%20DM%20IL%20LED&CHA](/CONTACT/CONTACT-US-ONLINE/?NO_CACHE=1&PRODUCT=LEICA%20DM%20IL%20LED&CHA)

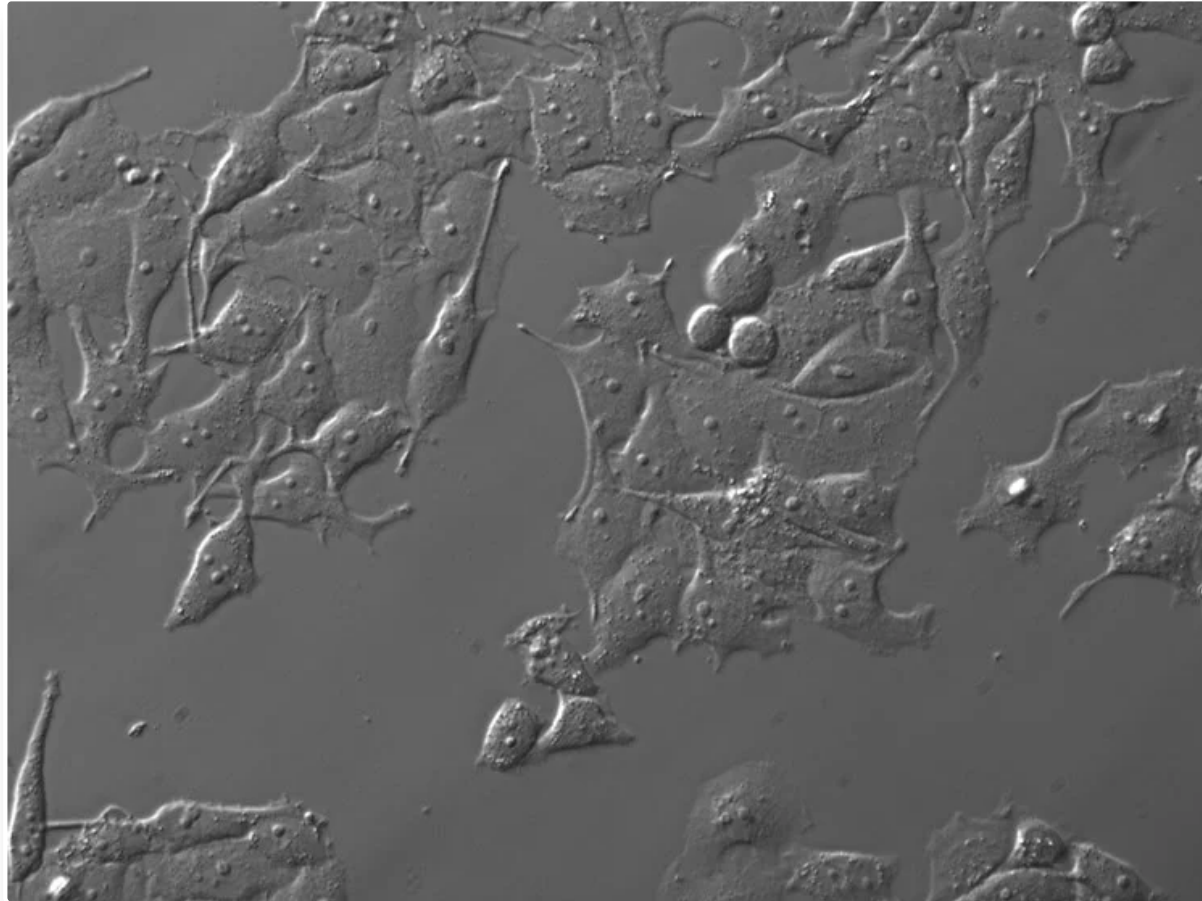
[Inverted \(/products/light-microscopes/inverted-microscopes/\)](/products/light-microscopes/inverted-microscopes/)

## Contrasting methods

In addition to Phase Contrast and Brightfield illumination, the DM IL features unique Integrated Modulation Contrast (IMC) from Leica without the need for special objectives.

 Call 1800 313 2339

Available for 10x, 20x, 32x, and 40x magnification.



[\(/fileadmin/global/products/Light/DM\\_IL\\_LED/Contrasting-Methods.jpg\)](https://fileadmin/global/products/Light/DM_IL_LED/Contrasting-Methods.jpg)

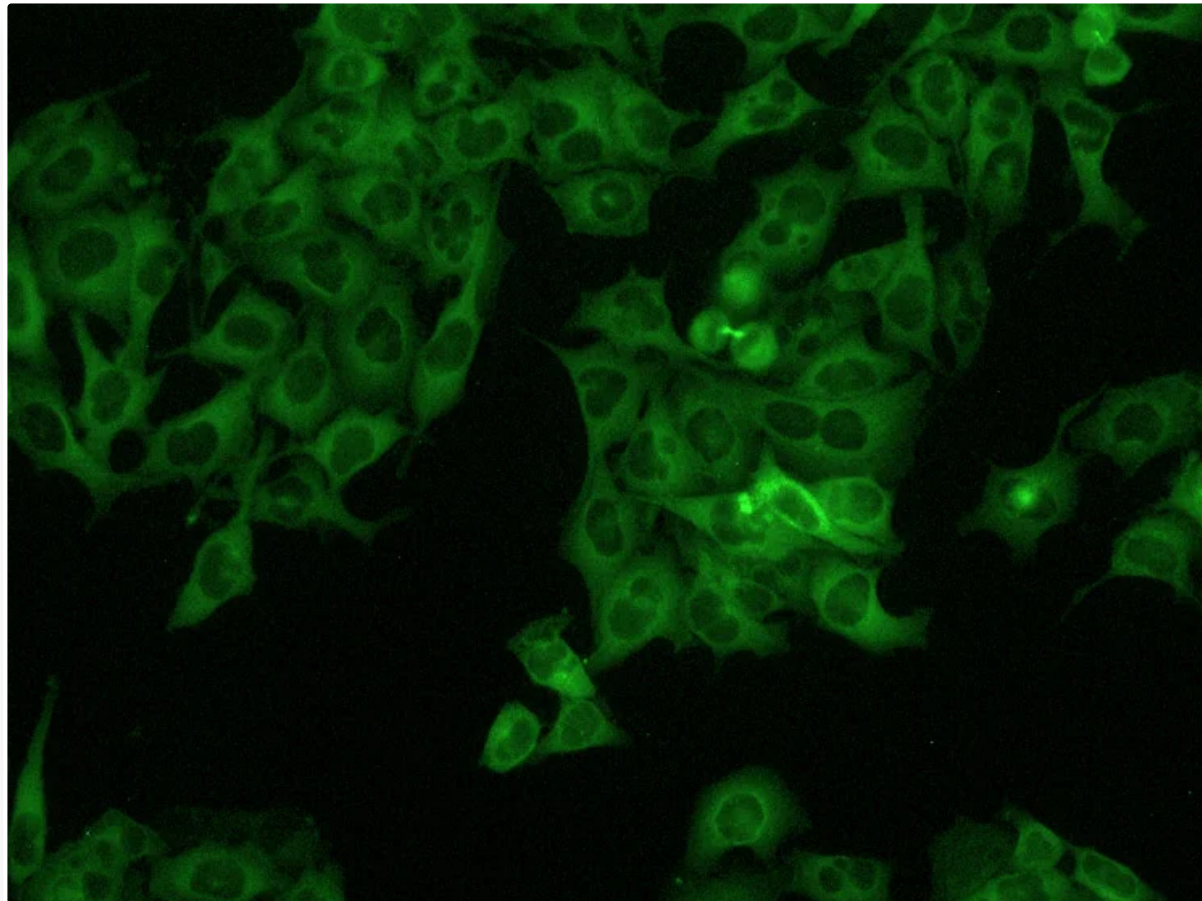
HeLa Cells IMC (Modulation Contrast)

 Call 1800 313 2339

## Fluorescence

Equipped with a 3 position fluorescence slider, the DMIL is capable of capturing brilliant fluorescence images. Confidently overlay multiple fluorescence images due to zero pixel shift technology.

Easily add another slider to image more fluorochromes.



Call 1800 313 2339

[\(/fileadmin/global/products/Light/DM\\_IL\\_LED/DM\\_IL\\_LED\\_Fluorescence.jpg\)](/fileadmin/global/products/Light/DM_IL_LED/DM_IL_LED_Fluorescence.jpg)

HeLa Cells 20x Fluorescence

## Cell culture

With a long working distance the standard DM IL microscope allows you to conveniently monitor large **cell culture** [\(/applications/life-science/cell-culture/\)](/applications/life-science/cell-culture/) flasks.

If your cell production reaches the next level, DM IL Cell Factory is the right choice. With a transmitted light arm of 480 mm, large multilayer vessels with up to 10 chambers can be checked—even using fluorescence.

Your current DM IL **can be upgraded** later to accommodate **large scale cell production**.

Please **contact your local sales representative** [\(/contact/contact-us-online/\)](/contact/contact-us-online/) for further information.

---

 Call 1800 313 2339



Call 1800 313 2339

[\(/fileadmin/global/products/Light/DM\\_IL\\_LED/Leica-DM-IL-Cellfactory.jpg\)](/fileadmin/global/products/Light/DM_IL_LED/Leica-DM-IL-Cellfactory.jpg)

DM IL LED with multi-stack cell culture flasks

## Live cell imaging

When observing living cells under a microscope, it's essential to maintain optimal conditions for the organisms. Leica Microsystems offers a wide range of accessories for any application, so the environmental conditions can be controlled easily during one experiment.

**[Environmental Equipment for Leica Inverted Microscope](/products/microscope-accessories/incubation-systems-and-stages/)**

 Call 1800 313 2339



(/fileadmin/\_migrated/Products/Keyfeatures/DM-IL-LED\_live-cell-imaging\_16.jpg).

## Documentation

A broad portfolio of digital cameras for brightfield and fluorescence documentation complements the DM IL LED imaging system.

Together with powerful **LAS X software** (</products/microscope-software/>), any desired task in your workflow can be supported, from simple documentation up to live cell imaging of your cells.

 Call 1800 313 2339



(/fileadmin/ migrated/Products/Keyfeatures/LAS X Ease-Operation-Mode\_16.jpg).

## Relaxed and comfortable

The ergonomic design of controls such as the focus dial, brightness controller, condenser height adjustment, objective nosepiece, and XY stage adjustment allows the user to comfortably work and manipulate their sample.

The microscope can even adapt to different users with height-adjustable stages and ergo tubes with variable height.

## Product life of 50,000 hours

High-intensity, high-contrast 5W LED illumination with a product life of 50,000 hours provides a constant color temperature. This makes documentation of your results remarkably easy and reliable. The brightness of the LED

Call 1800 313 2339



automatically adjusts to the contrast method which reduces the time needed for manual interactions.



(/fileadmin/\_migrated/Products/Keyfeatures/DM\_IL\_LED\_Product-life\_16.jpg)

Fluorescence LED illumination

Call 1800 313 2339